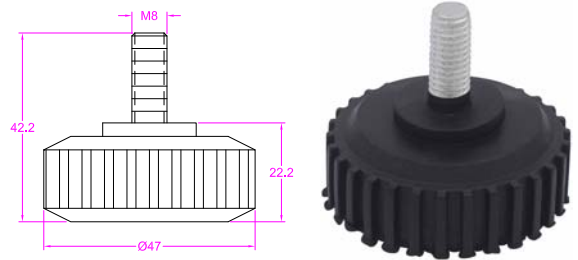


Ordering code
FWHD-100kg
Model Capacity



Leveling foot



Ordering code: LFM8

--- Specifications / 规格参数 ---

Capacity/量程	2/5/10/20/40/60/100/200/350/500kg		
Rated Output 额定输出	2.0 mV/V	Compensated Temp. 温度补偿范围	-10...+40°C
Excitation 激励电压	3~15V	Operating Temp. 工作温度范围	-20...+60°C
Zero Balance 零点输出	±0.1mV/V	Temp. Shift Zero 零点温度漂移	±0.02% of R.O./10°C
Nonlinearity 非线性	±0.02% of R.O.	Temp. Shift Span 灵敏度温度漂移	±0.02% of R.O./10°C
Hysteresis 滞后	±0.02% of R.O.	Input Resistance 输入阻抗	410±10Ω
Nonrepeatability 非重复性	±0.015% of R.O.	Output Resistance 输出阻抗	350±5Ω
Creep(30min) 蠕变(30min)	±0.03% of R.O.	Insulation Resistance 绝缘阻抗	>2000MΩ(50V)
Safe Overload 安全过载	150% of F.S.	Ingress Protection 防护等级	IP65
Ultimate Overload 极限过载	200% of F.S.	Material of Element 弹性体材料	Aluminum alloy 铝合金
Cable 导线	≤40kg Ø4*400mm 4-core shielded cable ≥60kg Ø5*1500mm 4-core shielded cable		
R.O.=Rated Output/额定输出 F.S.=Full Scale/满量程			

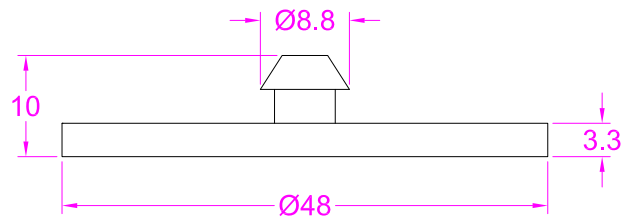
• Subject to change without notice / 如有更改,不另行通知

Stainless steel tray (Part No.: HDST)



L*W	370*260mm	Net weight	875g	Thickness	≈1mm
------------	-----------	-------------------	------	------------------	------

Cushion (Part No.: HDPC)



Placed between FWHD and tray