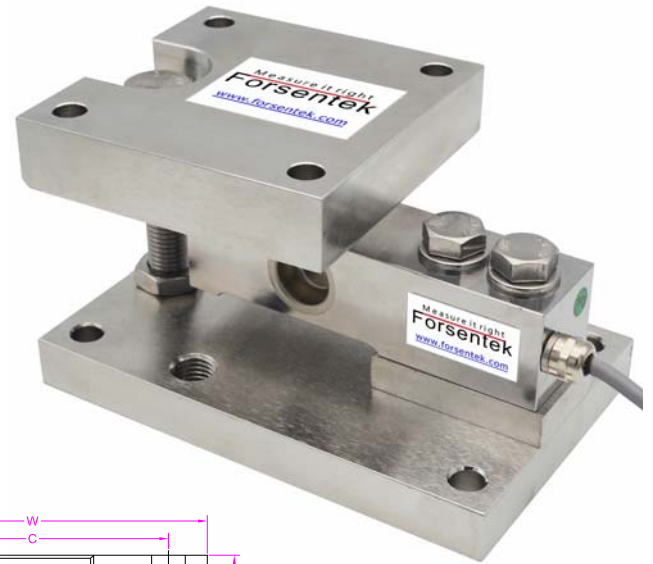
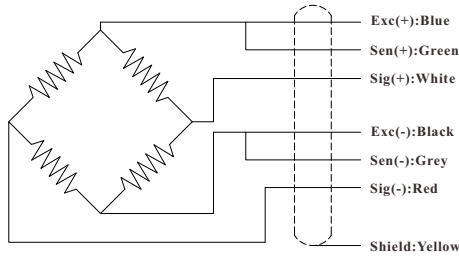
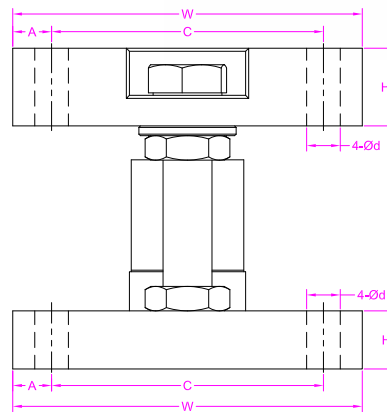
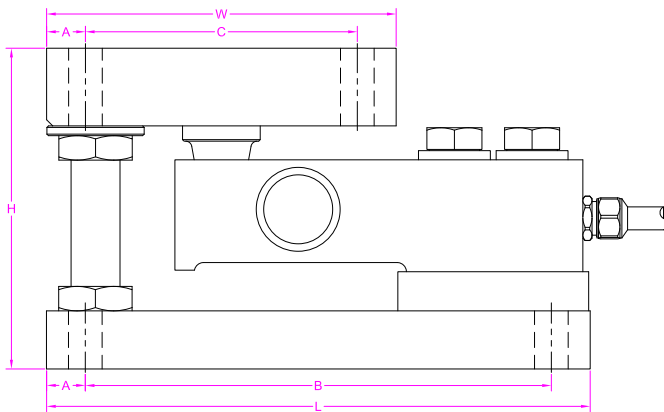


Wiring Diagram



| Capacity(kg) | L | W | H | H1 | H2 | A | B | C | d |
|-------------------|-------|-------|-------|------|------|------|-------|-------|------|
| 220/550/1100/2200 | 177.8 | 114.3 | 104.8 | 19 | 25.4 | 12.7 | 152.4 | 88.9 | 11 |
| 4400 | 235 | 152.4 | 136.5 | 25.4 | 31.8 | 25.4 | 184.2 | 101.6 | 17.5 |



Ordering Code

FHMT-1100kg

Model Capacity

--- Specifications / 规格参数 ---

| Capacity/量程 | 220/550/1100/2200/4400 kg | | |
|--|--|-------------------------------|------------------------|
| Rated Output 额定输出 | 2.0 mV/V | Compensated Temp. 温度补偿范围 | -10...+40°C |
| Excitation 激励电压 | 3~15V | Operating Temp. 工作温度范围 | -20...+65°C |
| Zero Balance 零点输出 | ±2% of R.O. | Temp. Shift Zero 零点温度漂移 | ±0.02% of R.O./10°C |
| Nonlinearity 非线性 | ±0.02% of R.O. | Temp. Shift Span 灵敏度温度漂移 | ±0.02% of R.O./10°C |
| Hysteresis 滞后 | ±0.02% of R.O. | Input Resistance 输入阻抗 | 390±30Ω |
| Nonrepeatability 非重复性 | ±0.02% of R.O. | Output Resistance 输出阻抗 | 352±3Ω |
| Creep(30min) 蠕变 | ±0.02% of R.O. | Insulation Resistance 绝缘阻抗 | >5000MΩ(50V) |
| Safe Overload 安全过载 | 150% of F.S. | Ingress Protection 防护等级 | IP68 |
| Ultimate Overload 极限过载 | 200% of F.S. | Material of Element 弹性体材料 | Stainless steel 不锈钢 |
| Cable 导线 | Ø5.3*3000mm 6-core shielded cable Ø5.3*3000mm 6芯屏蔽线 | | |
| R.O.=Rated Output/额定输出 F.S.=Full Scale/满量程 | | | |

• Subject to change without notice / 如有更改,不另行通知