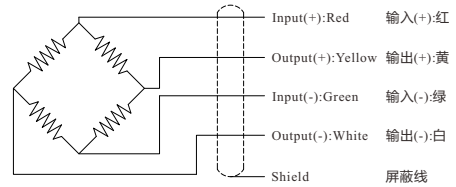


Dimensions in "mm"

| Capacity/KN | 120 | 180 | 220 | 260 | 330 | 400 | 500 |
|-------------|------|------|------|------|------|------|-----|
| A | 47.4 | 58.4 | 62.4 | 66.4 | 72.4 | 74.4 | 85 |
| B | 31 | 38 | 42 | 44 | 51 | 53 | 58 |
| C | 17 | 22 | 24 | 26 | 29 | 32 | 36 |

Wiring Diagram/接线图

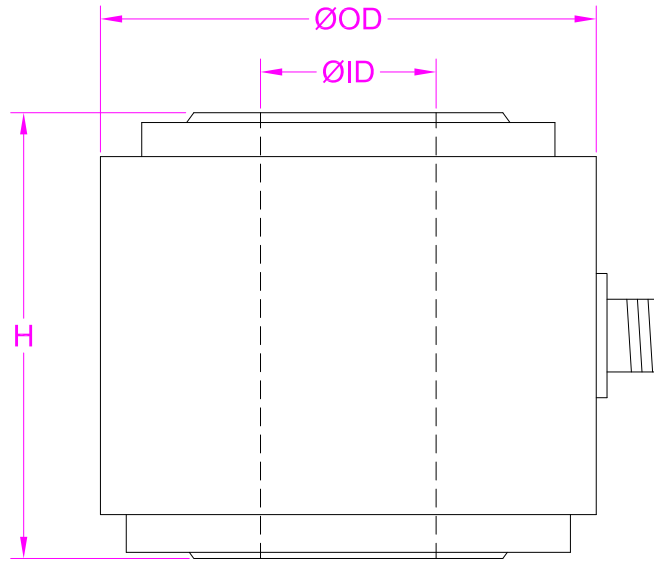


--- Specifications / 规格参数 ---

| Capacity/量程 | 120/180/220/260/330/400/500KN | | |
|---|--|-------------------------------|--------------------|
| Rated Output 额定输出 | 1.8 mV/V | Compensated Temp. 温度补偿范围 | -10...+40°C |
| Excitation 激励电压 | 5~15V | Operating Temp. 工作温度范围 | -20...+60°C |
| Zero Balance 零点输出 | ±2% of R.O. | Temp. Shift Zero 零点温度漂移 | ±0.01% of R.O./°C |
| Nonlinearity 非线性 | ±0.5% of R.O. | Temp. Shift Span 灵敏度温度漂移 | ±0.01% of R.O./°C |
| Hysteresis 滞后 | ±0.5% of R.O. | Input Resistance 输入阻抗 | 730±50Ω |
| Nonrepeatability 非重复性 | ±0.1% of R.O. | Output Resistance 输出阻抗 | 700±10Ω |
| Creep(30min) 蠕变 | ±0.1% of R.O. | Insulation Resistance 绝缘阻抗 | >2000MΩ(50V) |
| Safe Overload 安全过载 | 150% of F.S. | Ingress Protection 防护等级 | IP50 |
| Ultimate Overload 极限过载 | 200% of F.S. | Material of Element 弹性体材料 | Alloy steel 合金钢 |
| Cable 导线 | Ø4.8*2000mm 4-core shielded cable(Longer cable available) Ø4.8*2000mm 4芯屏蔽线 | | |
| R.O.=Rated Output/额定输出 F.S.=Full Scale/满量程 | | | |

• Subject to change without notice / 如有更改,不另行通知

Through hole load cell custom table



| | |
|--------------------|--|
| Capacity(KN) | |
| ID(mm) | |
| OD(mm) | |
| H(mm) | |
| Material | |
| Working temp. | |
| Ingress protection | |
| Cable length | |
| Desired accuracy | |
| Quantity(pcs) | |
| Other requirements | |
| | |
| | |
| | |