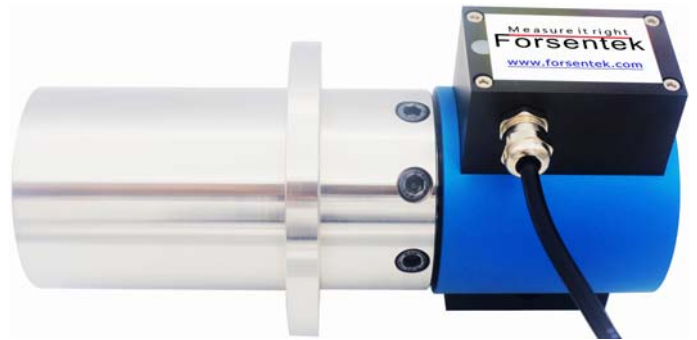


Ordering code

FYTP- 50 - 5000 -B

Torque range (NM) Speed range (RPM)

Code	Torque output	Speed output
A	-3.3-3.3V	0-3.3V
B	-5-5V	0-5V
C	-10-10V	0-10V
D	0-1.65-3.3V	0-3.3V
E	0-2.5-5V	0-5V
F	0-5-10V	0-10V
G	4-12-20mA	4-20mA



--- Specifications / 规格参数 ---

Capacity/量程	20/30/50/100 NM
Speed range/转速范围	0~10000RPM
Excitation/激励电压	12~24V DC
Speed Output/转速输出	Refer to ordering code
Torque Output/扭矩输出	
Sampling Rate/采样频率	500Hz
Nonlinearity/非线性	±0.2% of F.S.
Hysteresis/滞后	±0.2% of F.S.
Nonrepeatability/非重复性	±0.2% of F.S.
Creep/蠕变(5min)	±0.1% of F.S.
Safe Overload/安全过载	150% of F.S.
Ultimate Overload/极限过载	200% of F.S.
Working Temperature/工作温度	-10...+60°C
Temp. Shift Zero/零点温度漂移	±0.02% of R.O./°C
Temp. Shift Span/灵敏度温度漂移	±0.02% of R.O./°C
Ingress Protection/防护等级	IP40
Material of Element/弹性体材质	Stainless steel/不锈钢
Material of Housing/外壳材质	Aluminum alloy/铝合金
Cable/导线	Ø6*3000mm with mating connector Ø6*3000mm 屏蔽线

• Subject to change without notice / 如有更改,不另行通知