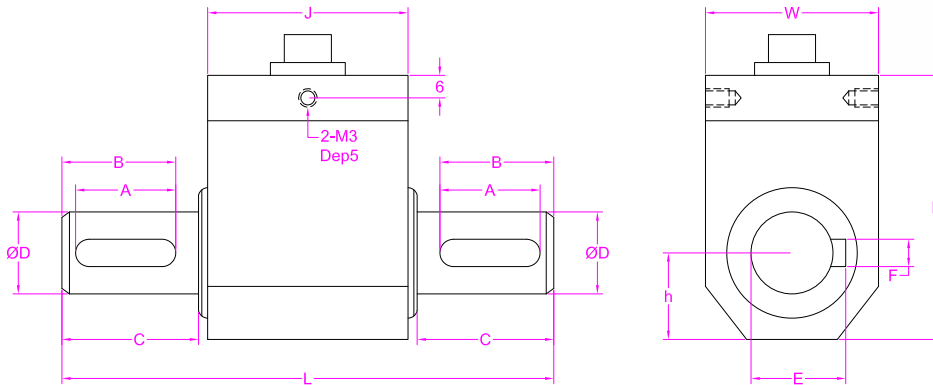


Capacity(NM)	L	H	W	A	B	C	D	E	F	J	h
10/20/30/50/100	108	58	38	22	25	30	18	20.5	6	44	19
200/300/500	143	73.5	53	30	35	40	28	31	8	56	27



- ☑ Rotating speed should be lower than 4000 r/m
- ☑ 转速应低于4000转/分

--- Specifications / 规格参数 ---

Capacity/量程	10/20/30/50/100/200/300/500NM		
Rated Output 额定输出	1.5mV/V	Compensated Temp. 温度补偿范围	-10...+40°C
Excitation 激励电压	5~15V	Operating Temp. 工作温度范围	-20...+60°C
Zero Balance 零点输出	±2% of R.O.	Temp. Shift Zero 零点温度漂移	±0.01% of R.O./°C
Nonlinearity 非线性	±0.15% of R.O.	Temp. Shift Span 灵敏度温度漂移	±0.01% of R.O./°C
Hysteresis 滞后	±0.15% of R.O.	Input Resistance 输入阻抗	<200NM 350±30Ω ≥200NM 700±30Ω
Nonrepeatability 非重复性	±0.05% of R.O.	Output Resistance 输出阻抗	<200NM 350±5Ω ≥200NM 700±10Ω
Creep(5min) 蠕变	±0.1% of R.O.	Insulation Resistance 绝缘阻抗	>5000MΩ(50V)
Safe Overload 安全过载	120% of F.S.	Ingress Protection 防护等级	IP62
Ultimate Overload 极限过载	200% of F.S.	Material of Element 弹性体材料	Stainless steel 不锈钢
Cable 导线	Ø5.5*3000mm 4-core shielded cable with mating connector Ø5.5*3000mm 4芯屏蔽线		
R.O.=Rated Output/额定输出 F.S.=Full Scale/满量程			

• Subject to change without notice / 如有更改,不另行通知