



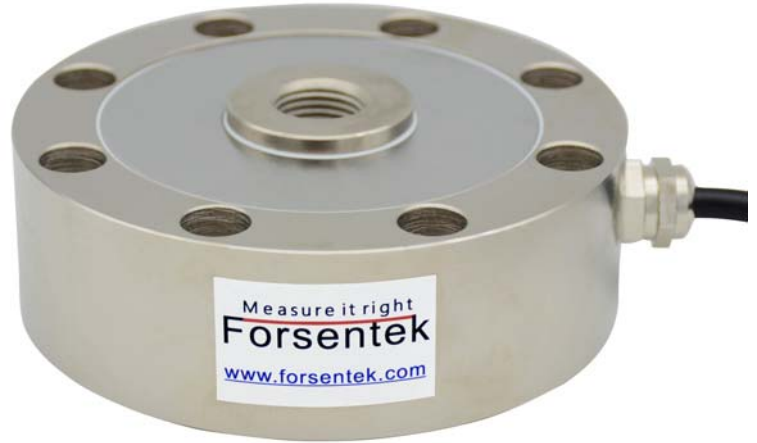
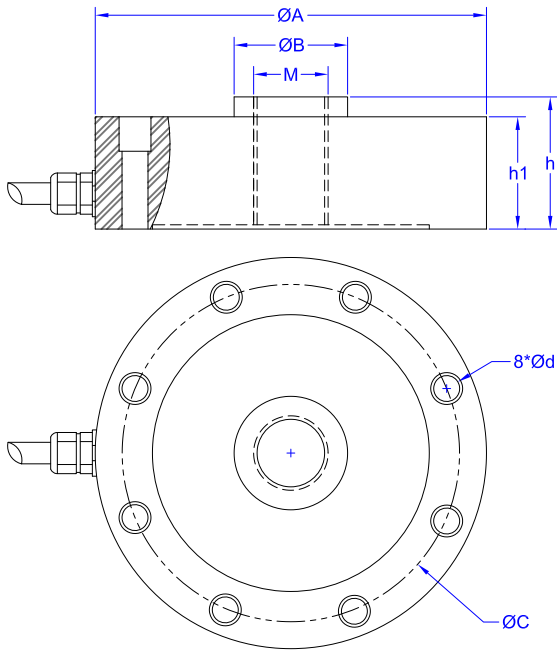
Discontinued

**Model FCA discontinued
 FCM is recommended as substitute
 Refer to next page for datasheet of FCM**

--- Specifications / 规格参数 ---

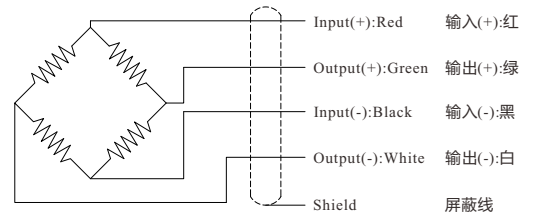
Capacity/量程	0.5/1/2/3/5/7/10/20/25/30/50T		
Rated Output 额定输出	2.0±10% mV/V	Compensated Temp. 温度补偿范围	-10...+40°C
Excitation 激励电压	5~15V	Operating Temp. 工作温度范围	-20...+60°C
Zero Balance 零点输出	±2% of R.O.	Temp. Shift Zero 零点温度漂移	±0.05% of R.O./10°C
Nonlinearity 非线性	±0.05% of R.O.	Temp. Shift Span 灵敏度温度漂移	±0.05% of R.O./10°C
Hysteresis 滞后	±0.05% of R.O.	Input Resistance 输入阻抗	750±30Ω
Nonrepeatability 非重复性	±0.03% of R.O.	Output Resistance 输出阻抗	700±3Ω
Creep(30min) 蠕变	±0.03% of R.O.	Insulation Resistance 绝缘阻抗	>5000MΩ(50V)
Safe Overload 安全过载	150% of F.S.	Ingress Protection 防护等级	IP66
Ultimate Overload 极限过载	200% of F.S.	Material of Element 弹性体材料	Stainless steel 不锈钢
Cable 导线	Ø5*3000mm 4-core shielded cable Ø5*3000mm 4芯屏蔽线		
R.O.=Rated Output/额定输出 F.S.=Full Scale/满量程			

• Subject to change without notice / 如有更改,不另行通知



Capacity(t)	A	B	C	d	h1	h	M
0.5/1/1.5/2/3/5/7	105	32	88.9	6.5	34	37	M16*1.5
10/20	125	39	101.6	8.5	48	52	M32*1.5
30/50	145	50	116.8	10.5	54	58	M40*1.5
60/80/100	205	80	162	12.5	78	85	M60*2

Wiring Diagram/接线图



--- Specifications / 规格参数 ---

Rated Output 额定输出	2.0±10% mV/V	Compensated Temp. 温度补偿范围	-10...+40°C
Excitation 激励电压	5~15V	Operating Temp. 工作温度范围	-20...+60°C
Zero Balance 零点输出	±2% of R.O.	Temp. Shift Zero 零点温度漂移	±0.05% of R.O./10°C
Nonlinearity 非线性	±0.05% R.O. (≥30t ±0.1% R.O.)	Temp. Shift Span 灵敏度温度漂移	±0.05% of R.O./10°C
Hysteresis 滞后	±0.05% R.O. (≥30t ±0.1% R.O.)	Input Resistance 输入阻抗	380±30Ω
Nonrepeatability 非重复性	±0.03% R.O. (≥30t ±0.05% R.O.)	Output Resistance 输出阻抗	350±10Ω
Creep(10min) 蠕变	±0.03% of R.O.	Insulation Resistance 绝缘阻抗	>5000MΩ(50V)
Safe Overload 安全过载	150% of F.S.	Ingress Protection 防护等级	IP66
Ultimate Overload 极限过载	200% of F.S.	Material of Element 弹性体材料	Alloy steel 合金钢
Cable 导线	(<5t, Ø5*3000mm) Ø5.8*6000mm 4-core shielded cable (<5t, Ø5*3000mm) Ø5.8*6000mm 4芯屏蔽线		
R.O.=Rated Output/额定输出 F.S.=Full Scale/满量程			

• Subject to change without notice / 如有更改,不另行通知