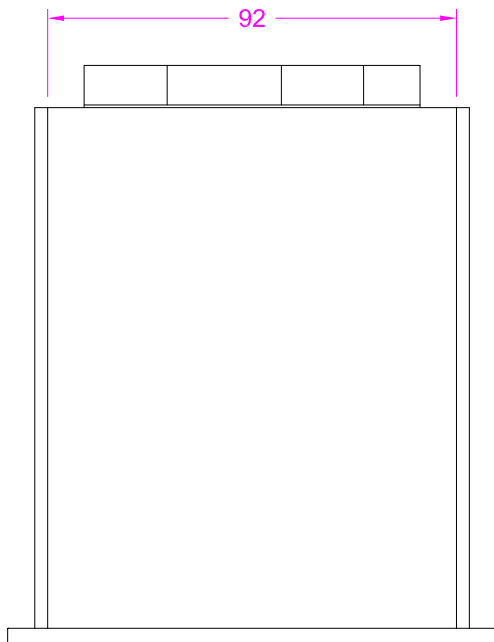
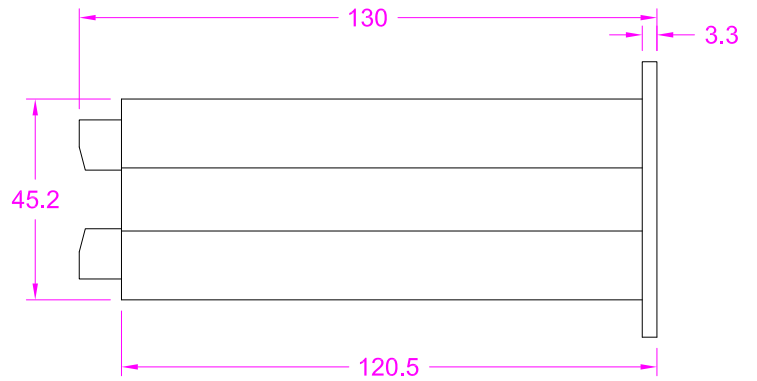
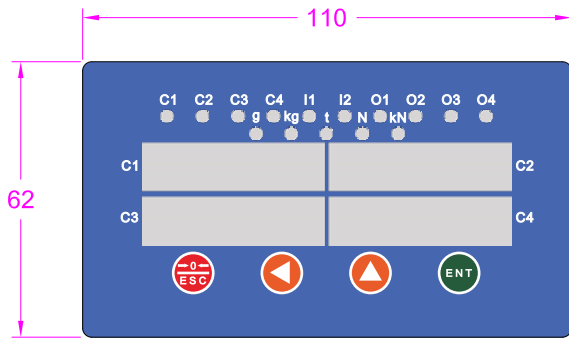
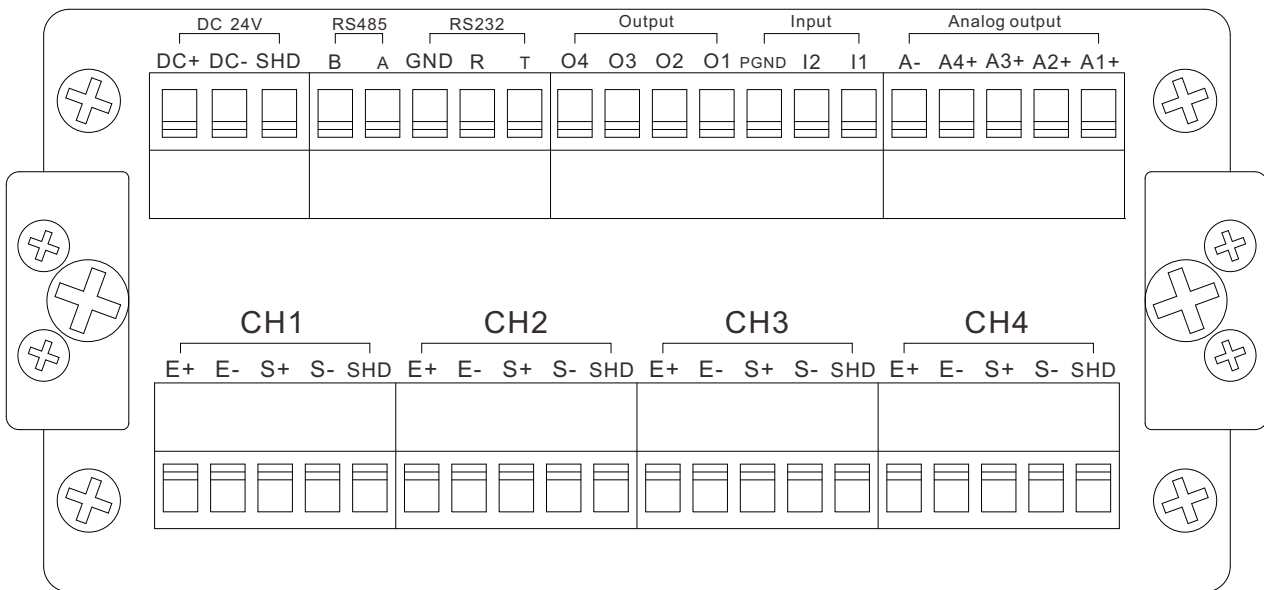


Indicator FP4C



Wiring terminals



Main parameters

Channel number	4
Panel cutout	93x46mm
Power supply	24±5 V DC
Power consumption	<10W
Excitation for sensor	5V DC
Sensor sensitivity	<6mV/V
Display range	-99999...999999
Non-linearity	<0.02% F.S.
A/D rate	50/100/200/400/800/1600/3200Hz(Settable)
Gain drifting	<10PPM/°C
Working temp.	-10...45°C
Relative humidity	<90% R.H (Without dew)
I/O	2 transistor inputs (NPN)
	4 transistor outputs (NPN, 24V 0.5A)
Serial communication	RS485 and RS232
Analog output	-3.3~3.3V,-5~5V,-10~10V,4~20mA
Housing	Aluminum
Net weight	About 430g

Ordering code

Part No.	I/O	Communication	Analog output	
		RS485&RS232	-3.3~3.3V,-5~5V,-10~10V	4-20mA
FP4C-A	√	√		
FP4C-V	√	√	√	
FP4C-I	√	√		√

[Contact us for user manual](#)