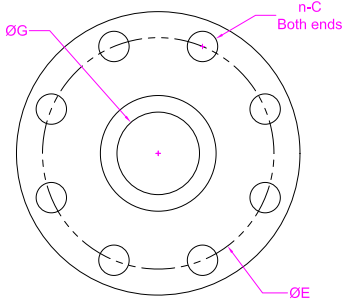
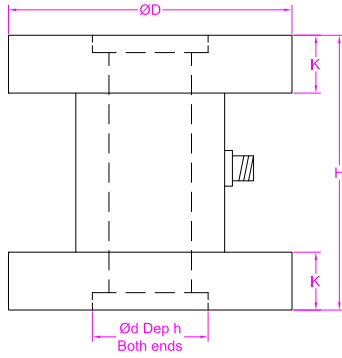
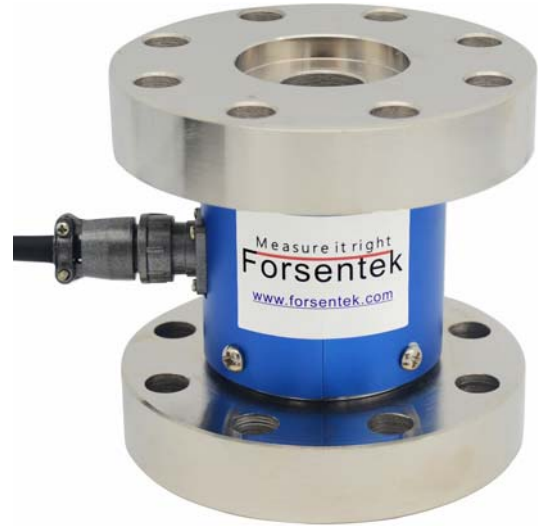
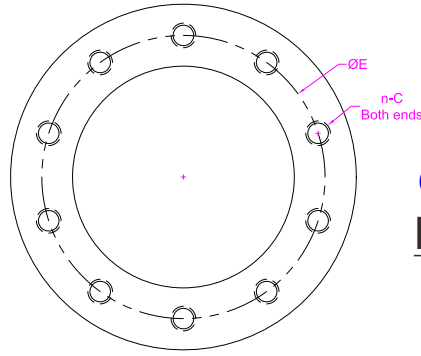
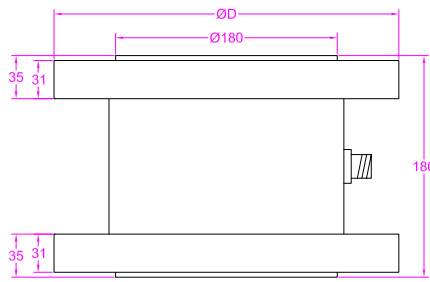


200~10kNM



20k~100kNM

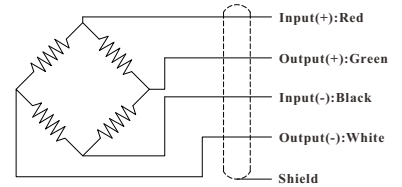


Ordering code
FT03-500NM

Model Capacity

P-1/2

Wiring Diagram



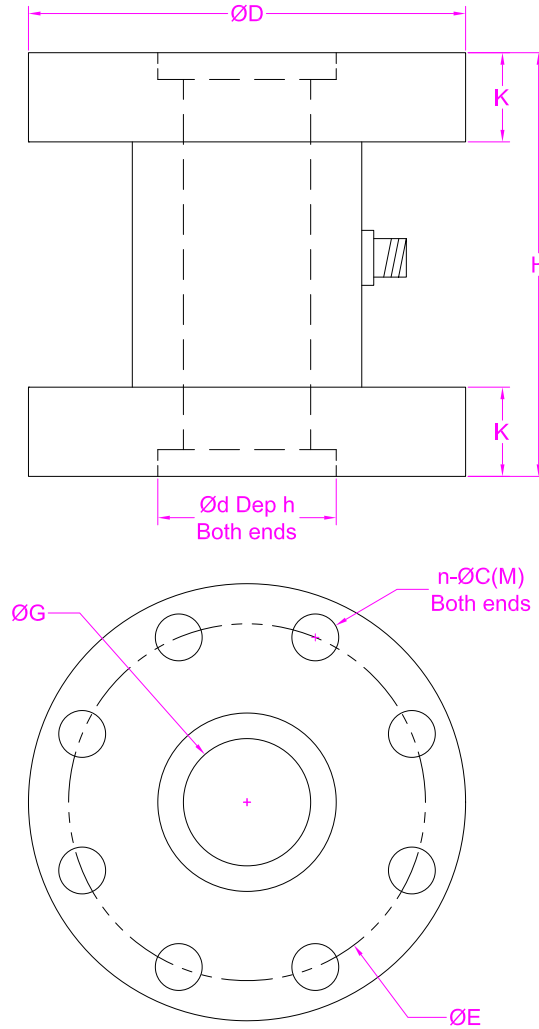
Capacity(NM)	D	H	d	h	K	n-C	E	G
200~1000	98	95	40	6	20	8-Ø10.5	80	20
2k/3k/5k	125	95	50	6	20	8-Ø12.5	105	40
10k	190	160	80	6	30	8-Ø19	160	30
20k/30k/40k/50k	280	/	/	/	/	10-M20	230	/
60k/70k/80k/100k	290	/	/	/	/	8-M24	240	/

--- Specifications / 仕様 ---

Capacity/定格容量	200/300/500/1k/2k/3k/5k/10k/20k/30k/40k/50k/60k/70k/80k/100k NM		
Rated Output 定格出力	1.5 mV/V	Compensated Temp. 温度補償範囲	-10...+40°C
Excitation 供給電圧	3~15V	Operating Temp. 動作温度範囲	-20...+60°C
Zero Balance 零バランス	±2% of R.O.	Temp. Shift Zero 零点の温度影響	±0.02% of R.O./°C
Nonlinearity 非直線性	≤10k: ±0.25% R.O. ≥20k: ±0.5% R.O.	Temp. Shift Span 出力の温度影響	±0.02% of R.O./°C
Hysteresis ヒステリシス	≤10k: ±0.25% R.O. ≥20k: ±0.5% R.O.	Input Resistance 入力抵抗	700±100Ω
Nonrepeatability 繰り返し性	≤10k: ±0.1% R.O. ≥20k: ±0.2% R.O.	Output Resistance 出力抵抗	700±5Ω
Creep(10min) クリープ(10min)	±0.1% R.O.	Insulation Resistance 絶縁抵抗	>5000MΩ(50V)
Safe Overload 許容過負荷	150% F.S.	Ingress Protection 防塵防水	IP62
Ultimate Overload 限界過負荷	200% F.S.	Material of Element 起歪体の材質	Alloy steel 合金鋼
Cable ケーブル	Ø5.5*3000mm 4-core shielded cable with mating connector Ø5.5*3000mm 4芯シールドケーブル		
R.O.=Rated Output/定格出力 F.S.=Full Scale/フルスケール			

• Subject to change without notice / 予告なしに変更されることが

Custom torque sensor



P-2/2

Capacity(NM)		Quantity	
H		h	
D		d	
n		C(M)	
G		h1	
E		/	/
Other requirements			

- For dimensions that don't matter, please fill in "Given by design" or acceptable range like "25~40mm".
- Drawings provided by clients are also welcome.
- Forsentek will evaluate the feasibility upon the given parameters and propose modifications accordingly to make it work.