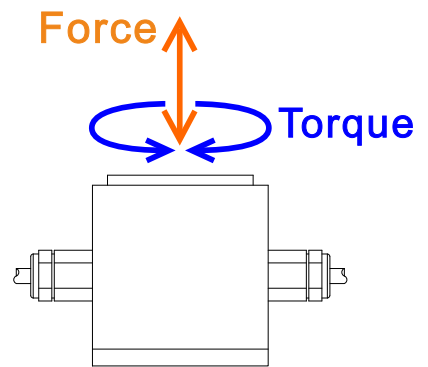
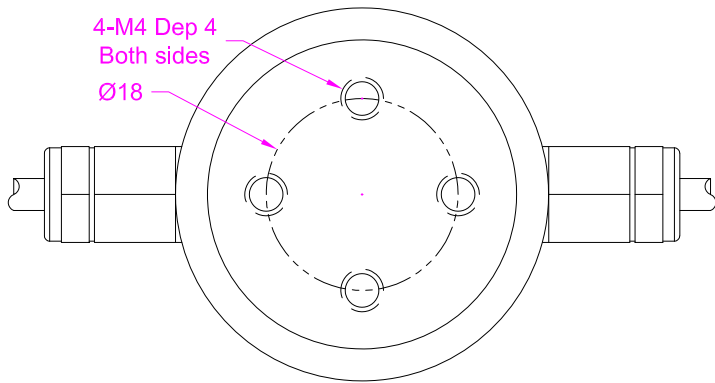


Customizable



--- Specifications ---

	Torque	Force
Capacity	6NM	700N
Rated Output	1.0 mV/V	
Excitation	3~15V	
Zero Balance	±0.05mV/V	
Nonlinearity	±0.3% of R.O.	
Hysteresis	±0.3% of R.O.	
Nonrepeatability	±0.2% of R.O.	
Creep(10min)	±0.1% of R.O.	
Safe Overload	120% of F.S.	
Ultimate Overload	150% of F.S.	
Working Temperature	-10...+60°C	
Temp. Shift Zero	±0.03% of R.O./°C	
Temp. Shift Span	±0.03% of R.O./°C	
Input Resistance	380±30Ω	
Output Resistance	352±5Ω	
Insulation Resistance	>2000MΩ(50V)	
Material	Stainless steel	
Ingress Protection	IP50	
Cable	2 x Ø3*3000mm 4-core shielded cable	

• Subject to change without notice